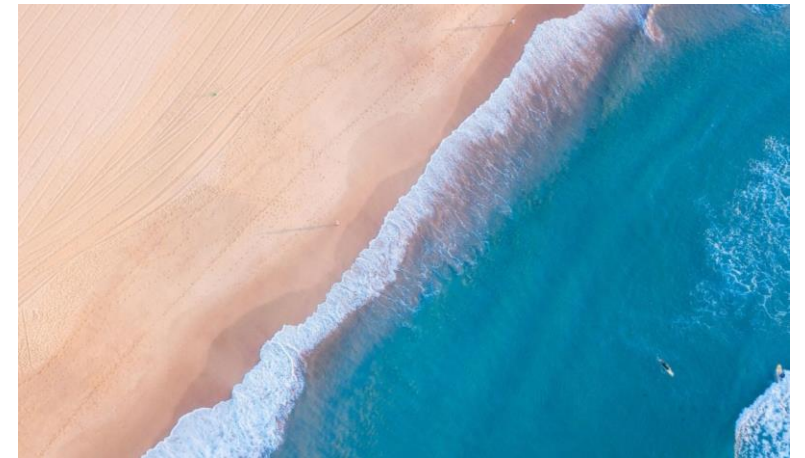


INTERCONTINENTAL RAS AL KHAIMAH

MINA AL ARAB RESORT & SPA

DESIGN NARRATIVE

INSPIRED BY THE MOUNTAINS, DESERT AND SEA



INSPIRED BY THE MOUNTAINS, DESERT AND SEA

The design of InterContinental Ras Al Khaimah Mina Al Arab Resort & Spa is inspired by the three original tribes of the Emirate, the Mountains, The Desert and The Sea.

From the staggered layout of the resort, with its peaks and troughs, to the beige colour palate and natural furnishings that are consistent throughout its interiors, each design draws from the physical, historical and social insights of the destination, bringing local culture to life and telling stories through subtle details, narratives for each outlet, and meaningful spaces.



Ras Al Khaimah City

ARRIVAL EXPERIENCE

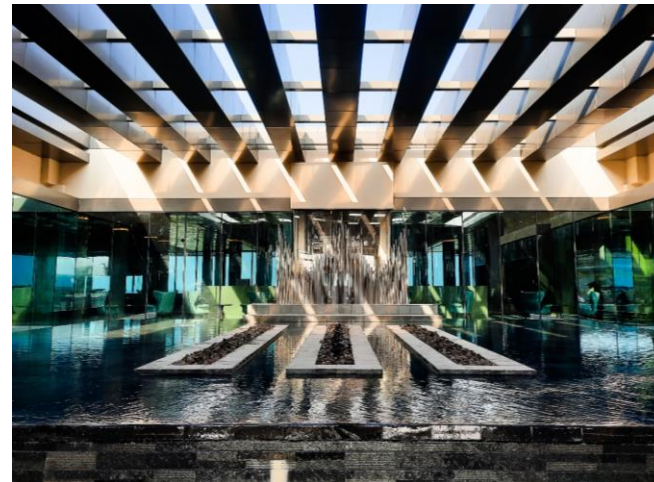
Once you leave the mainland, drive over the bridge connecting Mina Al Arab with Hayat Island and arrive outside the lobby, the first thing that you'll notice will be the water feature that lights up the flames by the minute the night has come reminding us a Bedouin camp-fire in the DESERT. The structure is build reflecting the MOUNTAIN range of Jabal Jais and the touch of water around the feature reminds us the BEACH tribe that is by the sea.



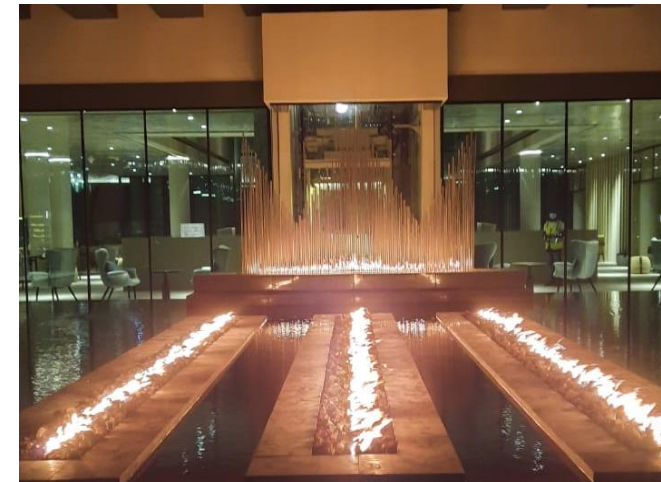
Bedouin Camp Fire



Jebel Jais



Sculpture Arrival Area – Day Time



Sculpture Arrival Area – Night Time

ARRIVAL EXPERIENCE

Setting the tone from the beginning, water flows throughout the resort, offering a relaxed setting and transporting guests into a tropical island paradise that is built in with close proximity to the desert.

The water features following through the entire property, is the interpretation of a water channel known to be the water source for the DESERT tribes and now to be a great link of the desert and beach tribes.

The result of sun and water is the lush green wall which greets you as you step into the lobby – this wall is the celebration of water and sun as a result of wonderful vegetation.



Desert Water Channel



Desert Water Channel



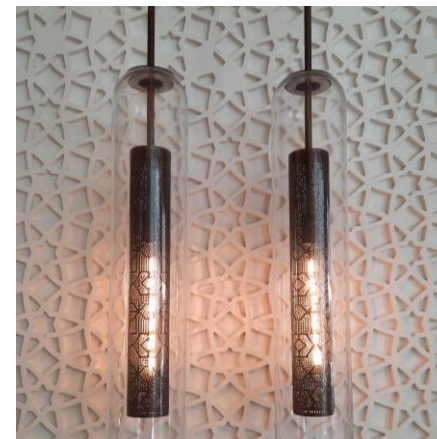
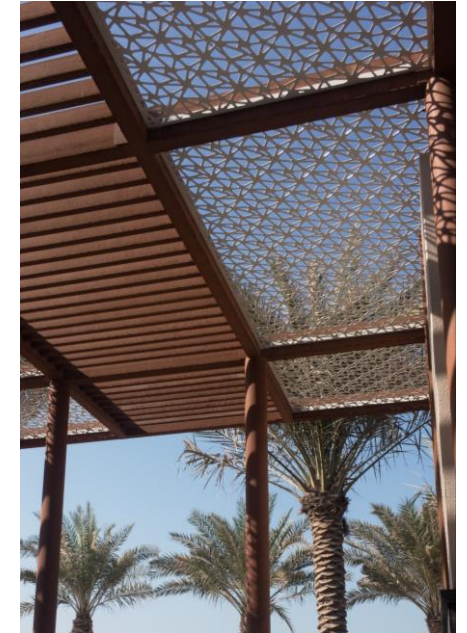
Green Wall Vegetation Hotel Lobby



Desert Water Channel Hotel

ARRIVAL EXPERIENCE

Arabic geometric patterns line the façade of the resorts buildings, with the pattern continuing into the lobby lounge where the culture and heritage of the region is still reflected with subtle Arabian aesthetics. In Islamic culture, the patterns are believed to be the bridge to the spiritual world, the instrument to purify the mind and the soul.



SHEIKH PORTRAITS IN THE LOBBY

This design has been created by Capsule Arts who is the Middle East's leading Arts Consultancy for the hospitality industry. This is a bespoke art for IC RAK bringing together the inspiration from celestial navigation and the heritage crafts. These artworks have been developed by string art using nails on a wood panel. Overall Dimensions | 2090 x 130 x 800 mm (w x d x h).



*HH Sheikh Mohammed Bin
Saud Bin Saqr Al Qasimi*

*HH Sheikh Khalifa Bin
Zayed Al Nahyan*

*HH Sheikh Saud Bin Saqr
Al Qasimi*

RAMSA



If you're having a chat with your Emirati friends then you are having a "ramsa". With an open lobby lounge filled with natural light that stems in from the floor to ceiling glass windows and furniture that is configured perfectly for any group size, Ramsa is the perfect neighbourhood place to gather.

Relaxed European-style seating matches the bites on offer, with craft coffee, tea, pastries, cakes, macaroons.

AMAR BAR

‘Amar’ means ‘Moon’ in Arabic, and is the perfect location to watch day turn into night as the moon rises above the sea. With speakeasy vibes, the lounge focuses on coppers, wood and leather, with low hanging lighting providing a cosy and intimate setting.

By the entrance to Amarbar is a glass whiskey cabinet containing 44 of the best whisky and whiskeys from around the world.

Top shelf whisky's are accessed by the bartenders by a sliding library ladder, providing instagrammable moments and an extra guest delight.

Continuing the mixology theme, a rustic wooden whisky cask is suspended above a private seating area, whilst circular tables with Arabic geometric patterns promote conversation as guests gather to reminisce on their day and look forward to the next one.



SAFFAR

‘Saffar’ means ‘journey’ and as our all day dining restaurant, offers cuisines from around the world, providing guests with the opportunity to either try something new, or find home comforts.

The second month of the Islamic calendar year, Saffar corresponds to the pre-Islamic Arabian time period where people were out gathering food, perfect for a buffet style outlet.

With live cooking stations throughout, Saffar is an interactive culinary journey, with the relaxed natural colours and wicker interiors, keeping in nature with the island living concept, reminiscence of a relaxed beach vibe.

The way the restaurant is designed offers a hideaway for a bigger family with it's private spaces or an open plan high table and high chairs if you wish not to be seated at a regular dining table in the main restaurant space.

Drift wood is being used a lot. Driftwood is wood that has been washed onto a shore or beach of a sea. This reminds us the look and feel of the historic houses of the 3 tribes in DESERT, MOUNTAIN, SEA.



Private Dining Area

NOHO BAR AND GRILL

Appealing to guests who come from the west, NoHo Bar and Grill brings authentic New York dining to Ras Al Khaimah.

Inspired by the stylish, artistic and urban downtown neighbourhood of North of Houston Street, the relaxed and friendly venue seamlessly transforms from a family style sharing menu place during the day to an edgy and electric hub with entertainment as evening falls.

As guests enter NoHo Bar and Grill, they are welcomed with a wall display containing wooden, rustic wine boxes featuring some of the best wines from around the world. The wine cases complement the lounge with low hanging lights, leather interior and dark contrasts and taking you all the way to a napa valley vineyard kind of feel in the outdoor.



North of Houston Street



Napa Valley Vineyard



NoHo

RESORT RITUAL

When the day comes to an end we celebrate into the night.
The sunset celebration of InterContinental Ras Al Khaimah is inspired by the original traditions and evening habits of the **THREE TRIBES OF RAS AL KHAIMAH** in the **DESERT – MOUNTAIN – BEACH**.

As the evening starts to dim guest come slowly from all various areas to the destination of the resort main fire pit.

When arrived at the firepit, Arabic delights are served and the lighting up of the fire pit is the indicator for the resort to tune from day to night. This is the moment when the entire resort lightning will adapt.

We remind ourselves of the old days when Bedouins in their tribes used to gather around the camp-fire in the evening to celebrate the night and tell each other stories of their day.

WHAT'S YOUR STORY?



Main Resort Fire Pit

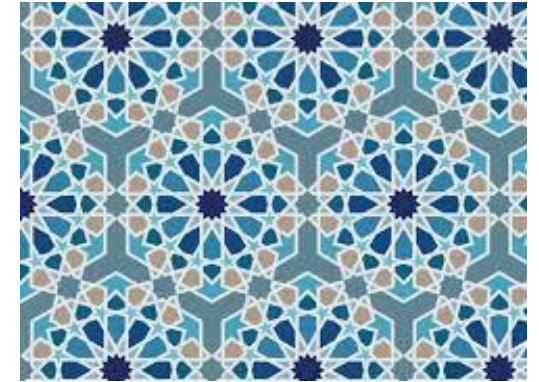


LEVANT & NAR

From the culinary offering to the design of the outlet, Levant and Nar is a celebration of the Levant region. Offering delicacies with a modern twist.

The open kitchen concept allows guests to witness their food being cooked, just like families would traditionally do as they gather back in the region. Authenticity is continued with Arabic geometric tiles lining the pillars of the restaurant and motifs at the centre of each table.

Levant & Nar is famous for its Levant culture celebration e. g. Ottoman Night, Turkish Bazar etc.



LEVANT & NAR

On the top of the terrace, which is surrounded by 360-degree sea views, lies an open coal fire pit. The word 'Nar' translates to 'Fire' in Arabic, an incredibly important element to the Bedouin tribes who used to gather around fire pits in the desert to recount stories.

After dinner, guests are invited to the fire pit on the terrace, for a ritualistic experience, whether that's smoking shisha or taking part in one of the outlets activations.

Guest delighters are Arak and Raki Trolley, Cappadocia Cocktail, Turkish Tea with Fortune Reading, Sunset Ritual to name a few.



Levant & Nar Fire Pit

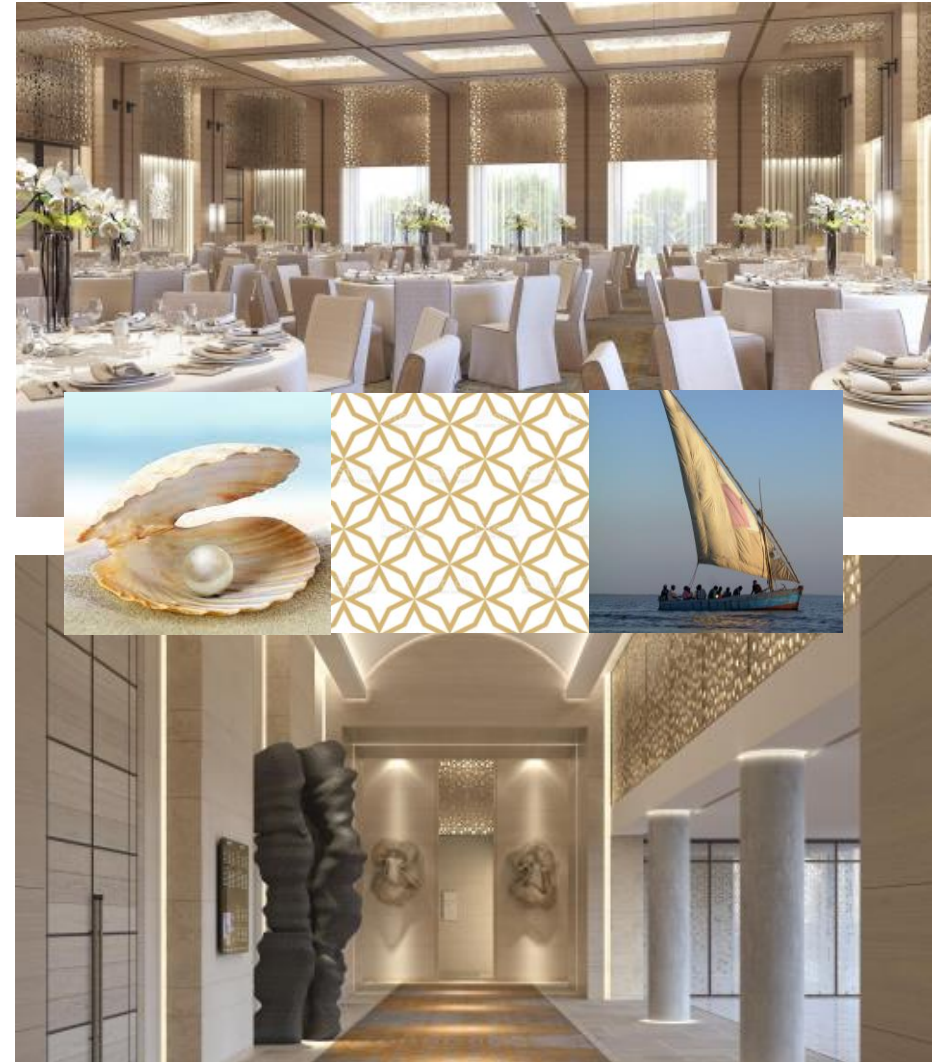


MEETING SPACES

At the heart of the event space lies **Juman**, a ballroom that is fit for any occasion. A Muslim girls name for Pearl, Juman celebrates the towards the regions rich pearl diving heritage. With floor to ceiling windows allowing guests to see the natural wonders of the region, including the Al Hajar mountains and the sea, the ballroom is filled full of natural light, combined with Arabic pattern design touches.

A nod to the sea that surrounds, the six meeting rooms are called **Lateen**, a triangular sail that dates back to the Roman times and powered the majority of Arabic led fleets for centuries.

The two boardrooms are named **Dana**, which in Arabic means the most valuable and beautiful pearl. A location where business gets done, the rooms signify wealth and good fortune.

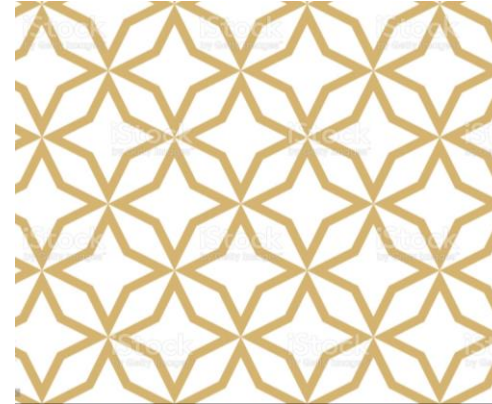


CLASSIC / DELUXE ROOM MAIN BUILDING

Arabic geometric patterns continuing into the bathroom area, reflected with subtle Arabian aesthetics in a modern environment.

Key element of every room is the un-interrupted view and connection with the nature – all rooms are sea facing. This reminds us a famous Arabic song talat dakat which is collaboration between renowned Egyptian actress Youssra, singer and composer Abu, and songwriter Tamer Habib and means - 3 beats and reminds us that our heart beats faster when we are excited / delighted about what we see.

Driftwood is being used throughout the property. Driftwood is wood that has been washed onto a shore or beach of a sea. Driftwood provides shelter and food for birds, fish and other aquatic species as it floats in the ocean and supports our deep connection to the 3 tribes DESERT, MOUNTAIN, SEA where without shelter it is difficult to survive.



CLUB ONE BEDROOM SUITE

All rooms and suites are sea facing.

Every area of the space offers you the opportunity to choose between indoor and outdoor. Entrances / Exits to the balcony follow through each unit.

Arabic geometric patterns line the wall of the living area, the patterns are believed to be the bridge to the spiritual world, the instrument to purify the mind and the soul and ensuring to have an unforgettable resort stay.

When you enter the bathroom, you see that washing basins are of different size. Number 2 represents **togetherness, partnerships, relationships and harmony**. It also signifies polarity two opposite thus washing basins with the same function but a different look.



Washing basins in all Suites and Villas





INTERCONTINENTAL®

RAS AL KHAIMAH
MINA AL ARAB RESORT & SPA

Thank you